

Quick Installation Guide

Network Video Recorder



Model: FN3004H
Colour: Black



Model: FN3004H
Colour: White

V1.4
EQ300408

1 Before You Start

Package Contents

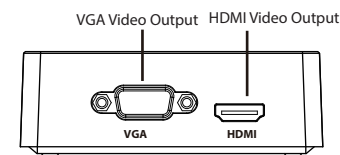
NVR	CD
DC Power Adapter	Warranty Card
Quick Installation Guide	

Security Warning

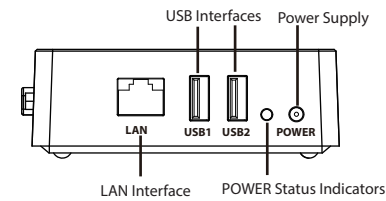
- Foscam cameras and NVRs require good security practices to safeguard your privacy. You should regularly change your camera or NVR password which is 8-10 numbers, letters, symbols combination.
- You should update your camera or NVR regularly. Make sure your camera or NVR has the latest firmware installed for your specific model and better experience.

2 Device Connection

Side Panel



Rear Panel

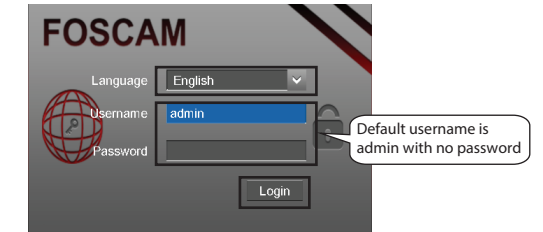


Interface Connection

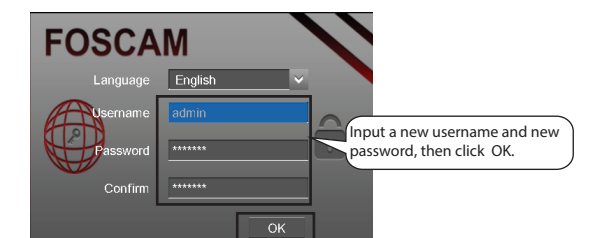
- Connect your display device to one of the video outputs (VGA or HDMI interface).
- Connect an external storage device to the USB interface as a recording. For example, mobile hard drive.
- Connect a mouse to the USB interface.
- Some devices need to connect to your router using an Ethernet cable, including the NVR, PC, IP Camera.
- Connect the power adapter to the power input port.

3 Login

- After the NVR starts up successfully, the Power indicator LED will turn green. The startup page is displayed on the screen.
- Login page.
Select the Language, Enter the **Username** and **Password**, then click on the **Login** button.



- For the initial log in, the system will prompt you to change your username and password. Once done, click the **OK** button.

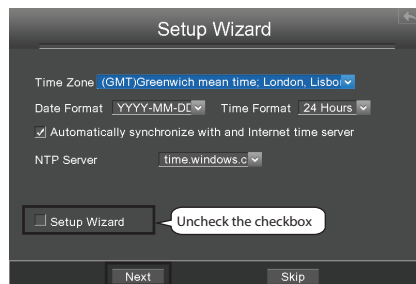


- After modifying the username/password, you will be taken to the **Setup Wizard**.

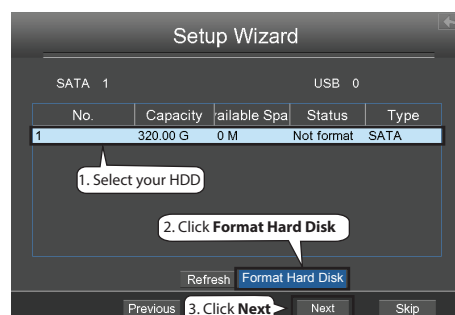
4 Setup Wizard

The Setup Wizard can walk you through some important settings on the NVR.

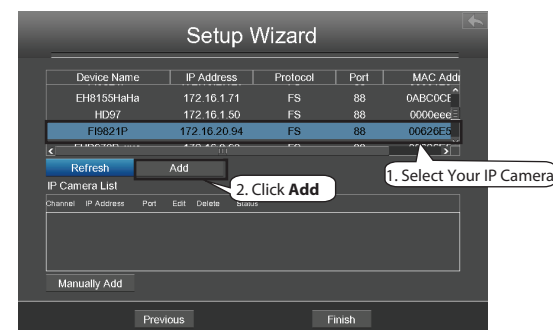
- Setting the time. If you don't want to use the Setup Wizard next time, uncheck the **Setup Wizard** checkbox. Click the **Next** button.



- Select the mobile storage device you would like to use, then click the **Format Hard Disk** button to set up the mobile storage device as a recording. Note that this will delete all files on the mobile storage device.

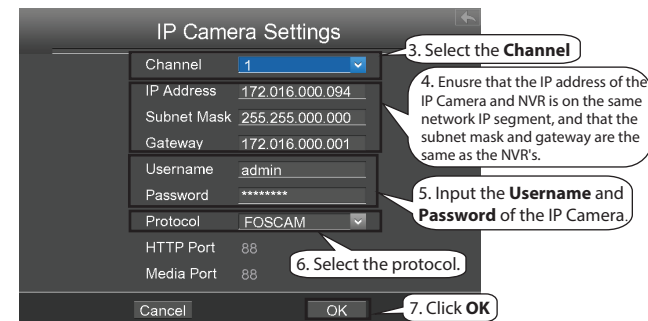


- You can add an IP Camera that is connected to the internet on the NVR.

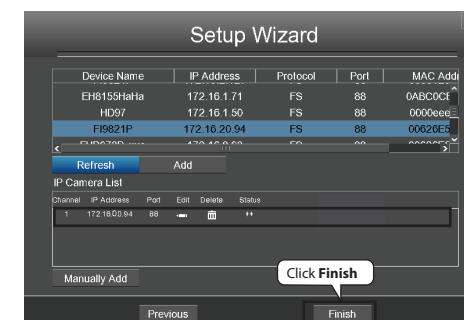


You can configure the following information for your IP Camera.

- Select a protocol depending on which IP Camera you have.
- FOSCAM protocol: The High Definition(HD) IP Cameras for Foscam.
 - MJ protocol: The Standard Definition(SD) IP Cameras for Foscam.
 - ONVIF protocol: IP Cameras which support ONVIF protocol.



- Repeat the Step3 to add multiple IP Cameras. Find your IP Camera in the **IP Camera List**, then click the **Finish** button to complete the setup wizard.



The live view interface will show you the video feed of each IP Camera.

5 Manual Recording

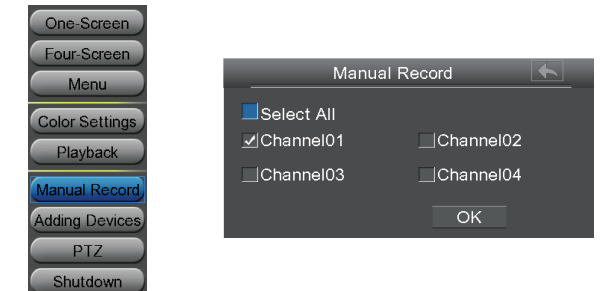
After the IP Camera is added successfully to the NVR, there are two ways to enable manual recording functionality when in the Live View mode.

Method 1

Left click the mouse in the channel, and some buttons will pop up as shown . Click the button to enable recording.

Method 2

- Right click the mouse in the Live View mode, and a shortcut menu will pop up.
- Select the **Manual Record** to enter the **Manual Record** page.
- Check the channels for which you want to enable recording. Click the **OK** button.
- Then click the icon to exit the interface.



In the Live View mode, the icon is at the bottom right of the screen for each channel, indicating recording is on going.

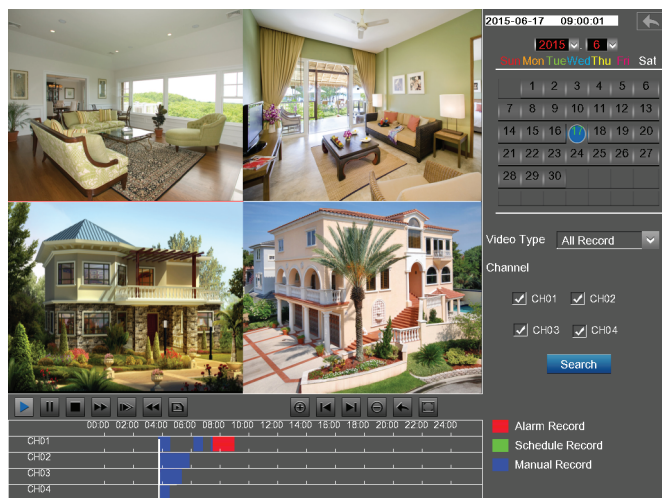
Note

To disable recording, click again the button in the channel, or uncheck the **channel** checkbox on the **Manual Record** interface.

6 Playback

You can see the recording information, include Manual Record, Alarm Record, Schedule Record.

1. Right click the mouse in the Live View mode, and a shortcut menu will pop up.
2. Select the **Playback** to enter the **Playback** page.
3. Select the time and Video Type of the recording. Check the Channels, and you can check up to four channels.
4. Click the **Search** button. Then you can see the recording video in the Playback page.



-8-

7 Remote Access

You can also access the NVR or IP Camera directly through the local network and remotely via manual port forwarding.

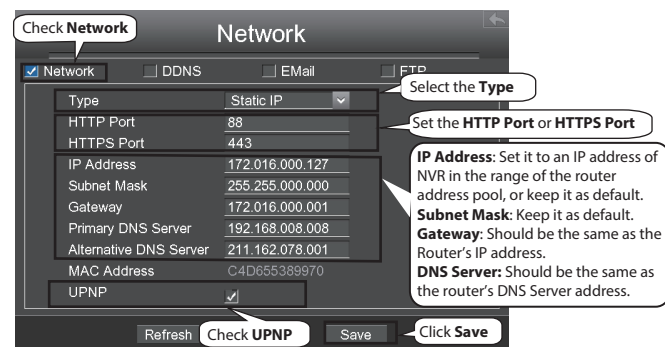
Note

This product supports 32-bit IE8 or later versions and does not support 64-bit IE browsers. It also supports Apple Safari and Mozilla Firefox browsers.

7.1 Network Configuration

1. Configure network information.

Right click the mouse in the Live View mode, choose "Menu > Settings > Network". Check the **Network** checkbox, then configure the network information of the NVR.

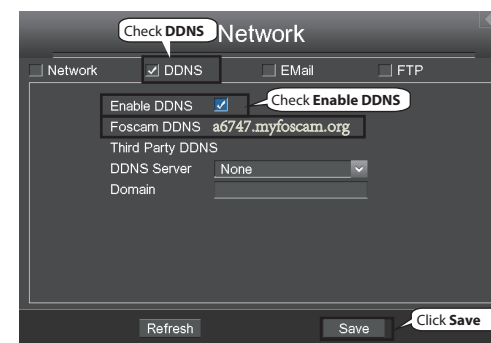


It is highly recommended to set the port range from 5000 to 65535, and the value of the port for each device should be unique.

-9-

2. Configure the DDNS.

Right click the mouse in the Live View mode, choose "Menu > Settings > Network". Check the **DDNS** checkbox. Enable DDNS on the NVR. We recommend you to use the DDNS by default.



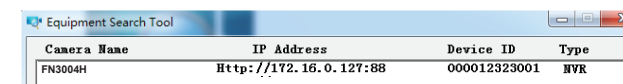
7.2 Access to the NVR in LAN

You can access to the NVR via the browser in LAN.

Open the "Equipment Search Tool" in the resource CD. It will display information of the NVR on your LAN.



Double click the NVR in the list, and your default browser will open up to the login page.



-10-

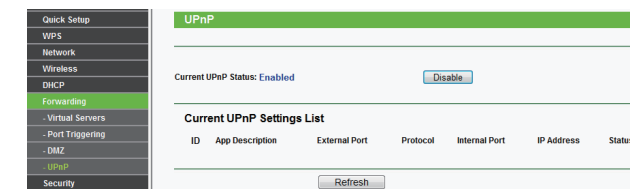
7.3 Access to the NVR in WAN

If UPnP has been **enabled** in the router, you do not need to perform the following steps.

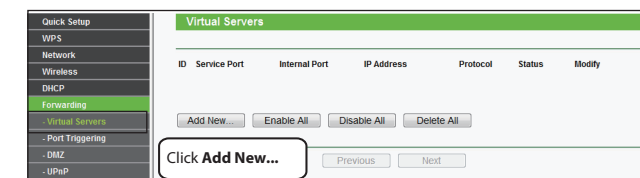
If UPnP is **disabled**, you need to select one of the following methods to configure port forwarding on your router.

For these steps, we will be using the TP-LINK brand wireless router as an example.

- If there is a UPnP function in your router. Choose "Forwarding > UPnP", make sure that the **Current UPnP Status** is **Enabled**.



- If there is no UPnP function in your router. You need to manually add port forwarding, refer to the following steps. You need go to the "Forwarding > Virtual Servers" panel for setup.



-11-

8 FAQ

- ★ Why recording is not performed after motion detection is enabled ?

On the "Motion Detection" page, check whether the following are correctly set:

- Check whether enable is selected. Check whether recording is selected.
- Check whether the motion detection channel is correct.
- Check whether a trigger time segment is set.
- Check whether a detection area is set.

- ★ Why can the NVR search the IP Camera but cannot connect ?

On the "IPC management" page, check whether the following are correctly set:

- Check whether the user name and password for the IP Camera are correct.
- Check whether the web page port for the IP Camera is correct.
- Check whether the IP Camera also supports the protocol selected in the NVR.
- Check whether the IP Camera video is normal.

-13-

- ★ Why can't download video file which is playing, or can't playback video file which is downloading?

To save consumed resources, the server limits concurrency of video playback and file download. In this case, stop video playback and then download files or play back videos after video files are downloaded.

- ★ After the adding of the IP Camera successfully, the video of the corresponding channel has lost in the live view mode.

Make sure that the IP Camera display mode is not more than NVR display mode. For example: NVR display mode for the 4 * 960P, the IP Camera display mode can not be 1080P.

- ★ Why can't opened web pages on the client be used properly after the NVR server switches to the 1080P mode?

When the NVR server switches to the 1080P mode, some functions can take effect only after the server reboots. In this case, log out of the Web client and log in to it again. In similar cases, for example, changing the IP address and HTTP port of the NVR, you need to log in to the client again.

-14-

9 Technical Support

If you have problems with your Foscam device, please contact the Foscam reseller you purchased from, or you can e-mail the Foscam headquarter technical support team: tech@foscam.com.

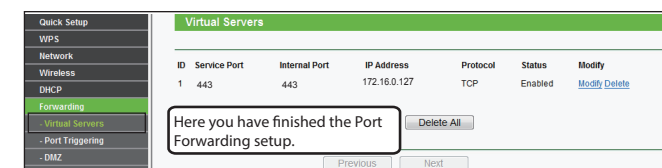
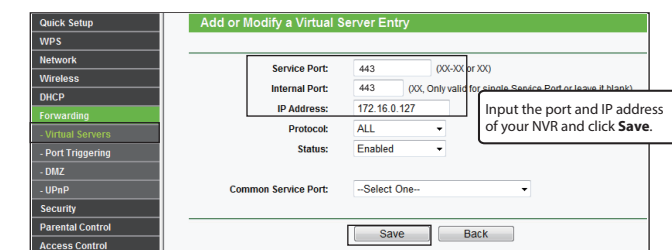
Your valuable comments and suggestions on improving Foscam products are welcomed!



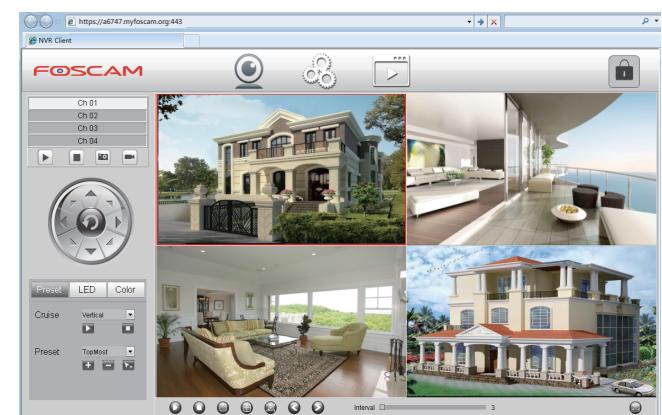
CE Certificate Website:
<http://www.foscam.com/company/ce-certificate.html>

ShenZhen Foscam Intelligent Technology Co., Ltd
www.foscam.com

-15-



Now you can access to your NVR by <https://domain name:HTTPS port> via the browser. eg, <https://a6747.myfoscam.org:443>



-12-