

Quick Installation Guide

FOSCAM®



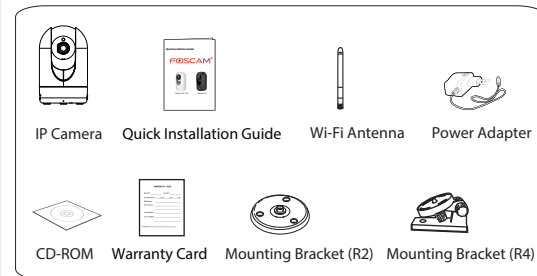
Model: R2 / R4



Model: R2

1 Installation Notice

Package Contents



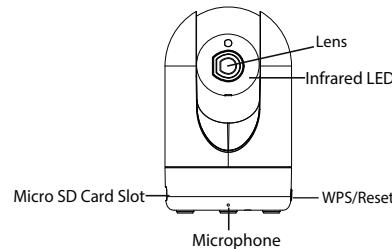
Security Warning

- Suggest you to change the password of your camera regularly, the password should be the combination of numbers, letters and special characters.
- To make sure your camera is safe and you get the better product experience, we suggest you to update your camera to the latest firmware every three months.
- Please take good care of your camera username and password, do not let other person know these information.

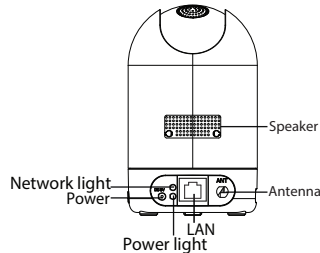
V1.0

2 Physical Description

Front panel



Rear panel



3 Download APP

To install the Foscam APP on your smartphone, you can choose either of the following methods:

• Scan QR code

If you have a QR Code APP on your phone, scan the code below.



• Download from App store

You can simply go to the App Store or Google Play Store and search for the term "Foscam". Find the APP that appears with the same icon as shown above, and download it to your device.

Before you continue, please note:

- Make sure your wireless router is enabled DHCP feature, and connected to internet.
- Make sure your smartphone is connected to your wireless router and located near the camera.

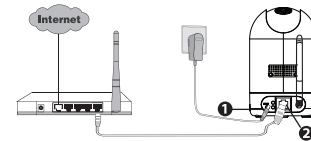
4 Add IP Camera

There are two ways (Wired connection and Wireless connection) to add IP camera via Foscam APP. You can choose either of the following way:

Note:

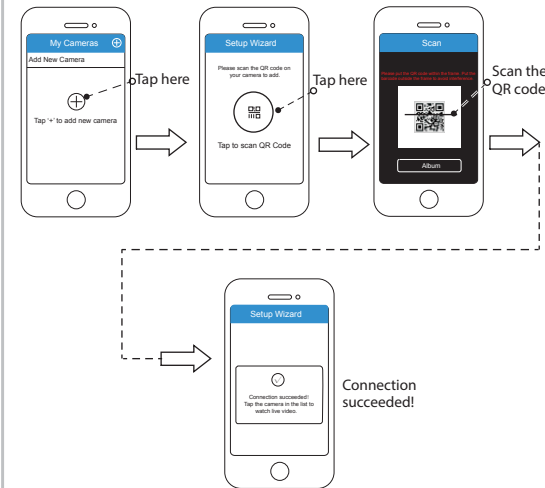
For R4, In order to watch smoother video, we recommend that you use wired connection.

4.1 Wired Connection

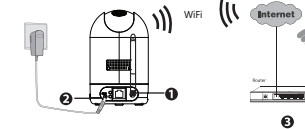


1. Connect the power adapter to the camera and wait a moment. Then the camera will play a sound "Hello, Foscam".
2. Connect your camera with router by Ethernet cable, then the camera will play a sound "Wired connection succeed".
3. Make sure your smartphone is connected to your wireless router.

4. Run the Foscam APP on your smartphone, register an Foscam Cloud account then log in. Please follow the below steps to add your camera.



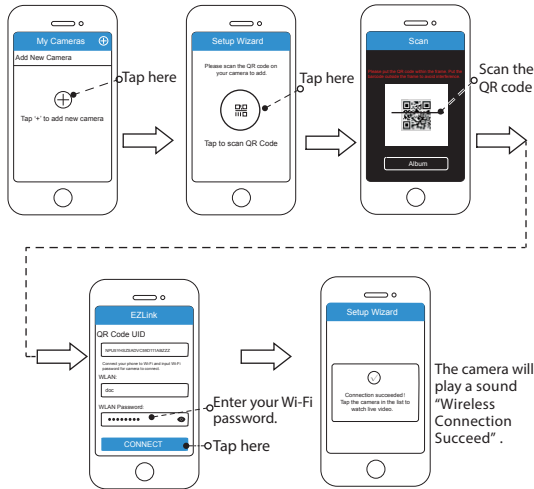
4.2 Wireless Connection



Note:

Do not connect the camera with router via Ethernet cable.

1. Install wireless antenna and position upright.
2. Connect the power adapter to the camera and wait a moment. Then the camera will play a sound "Hello, Foscam".
3. Make sure your smartphone is connected to your wireless router.
4. Run the Foscam APP on your smartphone, register an Foscam Cloud account then log in. The camera will play the warning tone "Ready for WiFi configuration", then you can follow the below steps to add your camera.



Note:
If your device fails to connect to the Wi-Fi using the Setup Wizard, press the "Reset" button on the camera to reset the camera then try again.

5 Access the IP Camera

After connecting your camera successfully, you can access your camera through three different ways (APP on smartphone, Foscam cloud website, Web UI).

■ Foscam Cloud Service

You can access camera via Foscam cloud website: www.myfoscam.com.

You can enjoy the following good experience on this web.

- It's so easy to access and manage your all IP cameras.
- You can enjoy the latest feature firstly on the website. For example you can use cloud storage, share your video, etc.

If you have registered account on Foscam APP, you also can use this account to log in and access the IP camera directly via browser.

■ Foscam APP

You can view the video of your camera via the Foscam APP anytime, anywhere.

Note:

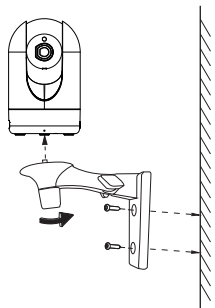
Only with the "Foscam" APP, you can experience the new features including EZLink, Online-Update, Message Push, etc. Any the third-party APP (other than "Foscam") can't experience these features.

■ Web UI

If you want to manage your camera more professionally, we suggest you to access your camera via browser. You can download the "Equipment Search Tool" from <http://www.foscam.com> to your computer, then access the camera directly via the search tool.



6 Hardware Installation



1. Screw the mount on the wall with the two screws provided.
2. Loosen the thumb screws to adjust the mount to the desired position. Once the position is set, tighten the screws securely.

7 Important Notice

■ Camera Username / Password

The camera username / password is used to access and manage your camera on computer. The username / password can improve the security of your camera significantly.

If you have forgotten the camera's username or password, you need to press and hold the "Reset" button on the camera with the camera powered on. After hearing the voice prompt, release the button. The camera will automatically reboot and restored factory settings. The factory default username / password is admin / (blank).

After restoring to factory settings, you need to delete it from Foscam APP, and then add the camera again.

■ Foscam cloud service Account / Password

Foscam cloud service account / password is used to access Foscam APP or Foscam cloud service website, you can register the account / password on one of them.

■ Storage Media

Support cloud storage, NVR(Network Video Recorder), Micro SD card.

If you hope to storage the video for a whole day, suggest you to use the NVR of Foscam.

■ Firmware Upgrade

You can upgrade the firmware on Foscam APP with new feature "One-key Online Upgrade"(Enter Foscam APP, select "Settings > Firmware Upgrade").

You also can download the latest version to upgrade your camera from office website <http://www.foscam.com> (Access the website, select "Support > Firmware Downloads").

■ Safety Tips

- Please check the power adapter before using the camera.
- Please lock and fix the camera and brackets with the locating screws for avoiding falling.
- To avoid the risk of fire or electric shock, please keep your camera in dry and cool place , do not let the camera be affected with damp.
- Camera is precision electronic equipment, please keep it away from children.
- Change your default port to greater range, because hackers often target default ports.
- Check the logs of your Foscam cameras often. Foscam Cameras have embedded logs which tell you which IP addresses are accessing the camera.

8 Technical Support

If you have problems with your Foscam IP Camera, please contact the Foscam reseller you purchased from. If you still can't resolve the problem, please e-mail the Foscam headquarter technical support team: tech@foscam.com. Your valuable comments and suggestions on improving Foscam products are welcomed!

FOSCAM[®]



CE Certificate Website:

<http://www.foscam.com/company/ce-certificate.html>

ShenZhen Foscam Intelligent Technology Co., Ltd

www.foscam.com